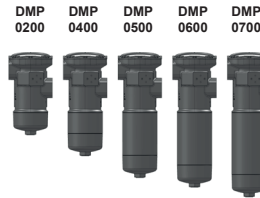




# RT FILTER TECHNIK

## Inline Filter DMP

Flow direction from in to out  
up to 500 l/min, up to 25 bar



### 1. TECHNICAL SPECIFICATIONS

#### 1.1 FILTER HOUSING

##### Design

This RT inline filter in cast design is built in five stages and is equipped with SAE flange ports, mounting plate for clogging indicators, mounts etc. Medium flows through the filter elements from inside to outside. This filter series is ideal for large flow rates in low-pressure lines or test bench applications.

The filter housings are designed in accordance with international regulations. They consist of a filter housing and cover. The element is top-removable.

##### Standard equipment

- Mounting holes in the housing
- Oil drain plug
- Integrated magnetic core
- With bypass valve
- Port for a clogging indicator

#### 1.2 FILTER ELEMENTS

RT filter elements are validated and their quality is constantly monitored according to the following standards: ISO 2941, ISO 2942, ISO 2943, ISO 3968, ISO 11170, ISO 16889

Filter elements are available with the following pressure stability values:

Glass fibre (ULP):	6 bar
Glass fibre with pre-filter (UMC):	6 bar
Wire mesh (WPI):	6 bar

Other filter elements and filtration ratings on request.

#### 1.3 FILTER SPECIFICATIONS

Nominal pressure	25 bar
Temperature range	-30 °C to +100 °C
Material of filter housing	Spheroidal graphite iron/aluminium
Material of cover	Aluminium
Type of clogging indicator	Differential pressure switch
Response pressure of clogging indicator	2 bar (others on request)
Bypass cracking pressure	3 bar (others on request)

#### 1.4 SEALS

NBR (= Perbunan)

#### 1.5 MOUNTING

Inline filter

#### 1.6 SPECIAL MODELS AND ACCESSORIES

- No port for clogging indicator on filter housing
- Without magnetic core
- Seals in FKM

#### 1.7 SPARE PARTS

See Original Spare Parts List

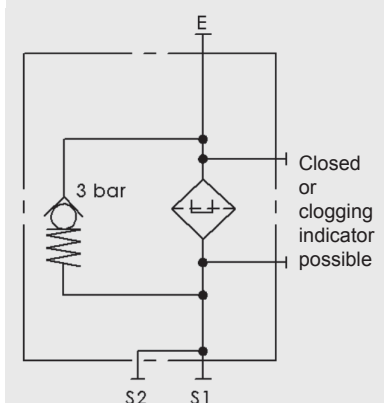
#### 1.8 COMPATIBILITY WITH HYDRAULIC FLUIDS ISO 2943

- Hydraulic oils H to HLPD DIN 51524
- Lubrication oils DIN 51517, API, ACEA, DIN 51515, ISO 6743
- Compressor oils DIN 51506
- Biodegradable operating fluids VDMA 24568 HETG, HEES, HEPG

#### 1.9 IMPORTANT INFORMATION

- Filter housings must be earthed
- When using electrical clogging indicators, the electrical power supply to the system must be switched off before removing the clogging indicator connector

#### Symbol



## 2. MODEL CODE (also order example)

DMP 0400 UMC 010 V M D FF 10 N VX X 1 /-XXX

### 2.1 FILTER ASSEMBLY

#### Filter type

DMP

#### Size

0200, 0400, 0500, 0600, 0700

#### Filter material

ULP glass fibre  
UMC glass fibre with pre-filter  
WPI wire mesh

#### Filtration rating in $\mu\text{m}$

ULP 010, 025  
UMC 010, 020  
WPI 100

#### Bypass valve

V with bypass valve  
X without bypass valve

#### Magnetic core

M with magnetic core  
X without magnetic core

#### Setting range

D 25 bar

#### Type and size of port

Type	Port	Size of filter				
		0200	0400	0500	0600	0700
FF	G1 1/2	●	●	●	●	●
JJ	SAE 1 1/4"	●	●	●	●	●
KK	SAE 1 1/2"	●	●	●	●	●

others on request

#### Position of ports

10 Standard (clogging indicator on outlet side)

#### Seals

N NBR (Perbunan)  
V FKM

#### Clogging indicator

VX without clogging indicator  
VG mounting plate for external clogging indicator  
VO visual  
VE electrical  
VA visual/electrical

#### Response pressure of clogging indicator

A 1.8 bar  
X no clogging indicator

#### Modification number

X the latest version is always supplied

#### Supplementary details

## 2.2 REPLACEMENT ELEMENT

UMC-0010-xxx-xxxx-x-N-RT /-XXX

### Filter material

ULP, UMC, WPI

### Filtration rating in $\mu\text{m}$

ULP 0010, 0025

UMC 0010, 0020

WPI 0100

### RT code

### Seals

N NBR (Perbunan)

V FKM

### Packaging

### Supplementary details

## 2.3 REPLACEMENT CLOGGING INDICATOR

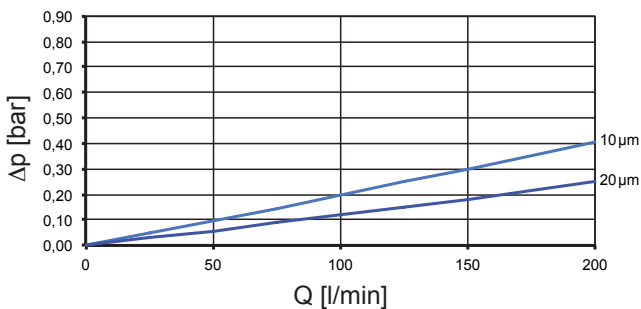
(on request)

## 3. FILTER CALCULATION / DIMENSIONING

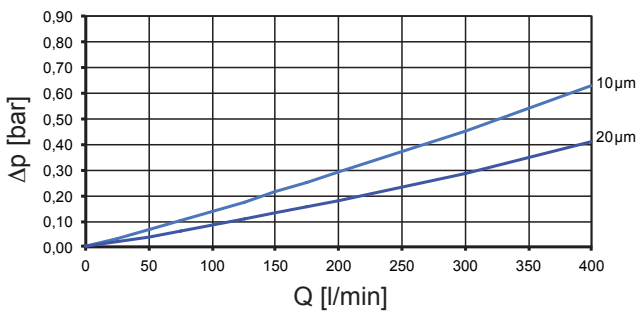
### 3.1 PERFORMANCE CURVES FOR FILTER ASSEMBLY

The total performance curves with UMC element apply to mineral oil with a density of  $0.86 \text{ kg/dm}^3$  and a kinematic viscosity of  $30 \text{ mm}^2/\text{s}$ .

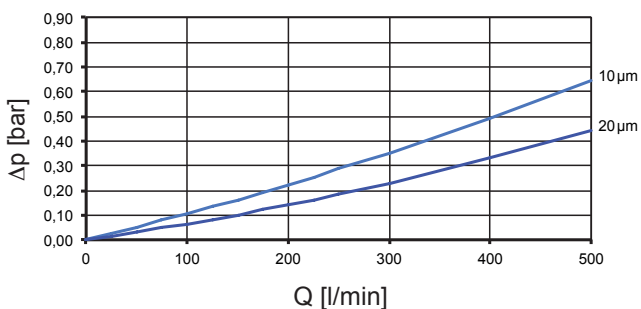
#### DMP 0200



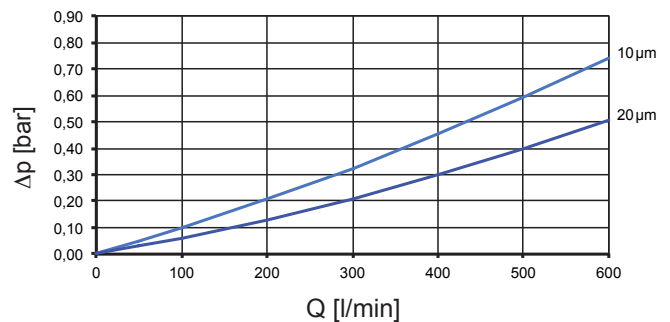
#### DMP 0400



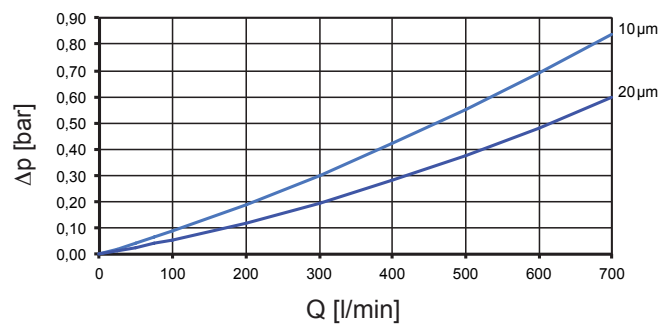
#### DMP 0500



#### DMP 0600

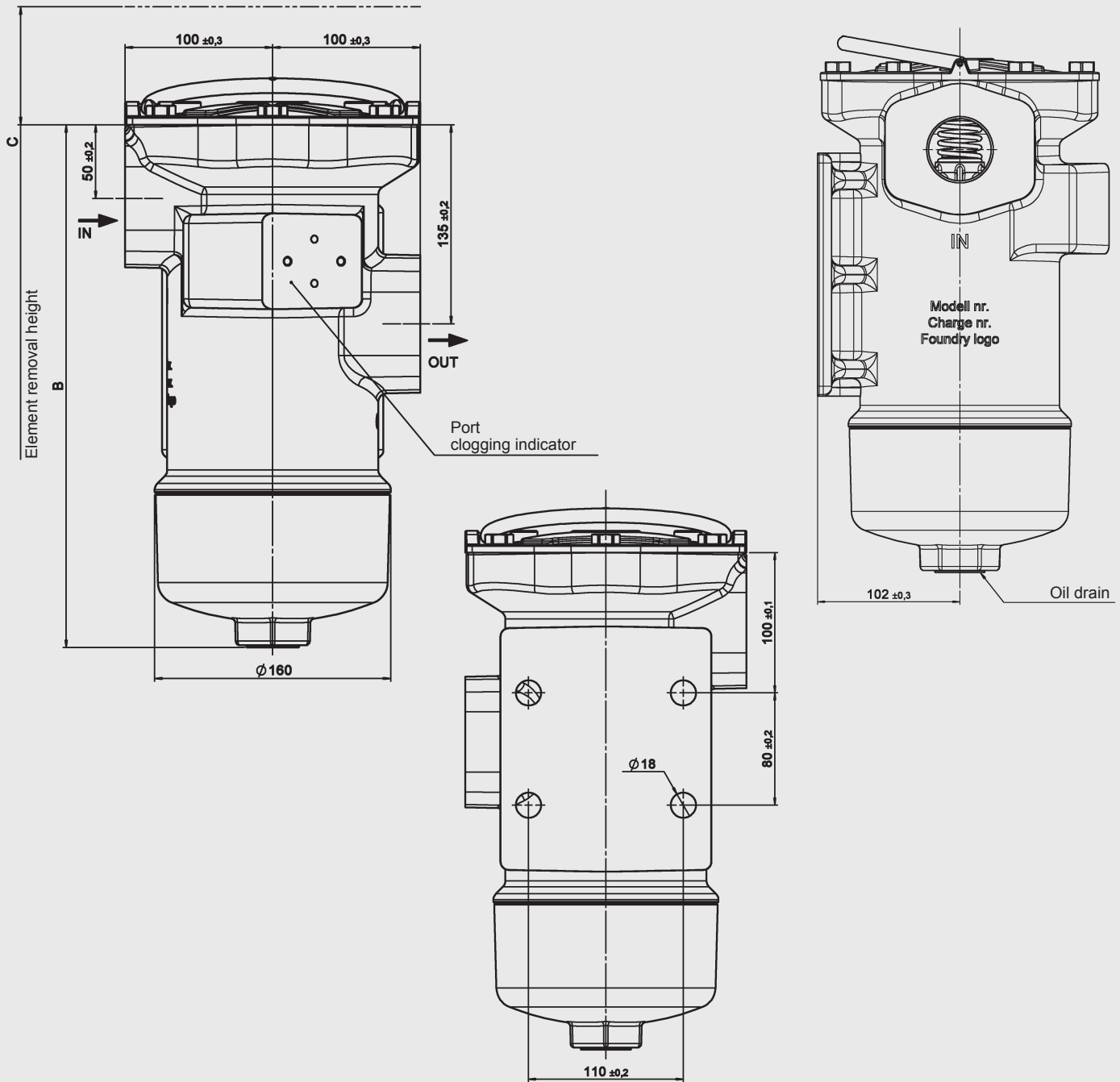


#### DMP 0700



## 4. DIMENSIONS

### DMP



Type	B	C	Weight incl. element [kg]
DMP 0200	354.5	250	23
DMP 0400	452.5	350	25
DMP 0500	554.5	450	27
DMP 0600	599.5	500	29
DMP 0700	644.5	550	31

### NOTE

The information in this brochure relates to the operating conditions and applications described. For applications or operating conditions not described, please contact the relevant technical department. All technical details are subject to change without notice.

**RT-Filtertechnik GmbH**  
 Postfach 21 60  
**D-88011 Friedrichshafen**  
 Tel.: +49 7541 508-0  
 Fax: +49 7541 508-101  
 e-mail: sales@rt-filter.de  
 Internet: www.rt-filter.de