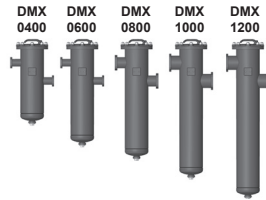




# RT FILTER TECHNIK

## Inline Filter DMX

Flow direction from in to out  
up to 1,200 l/min, up to 25 bar



### 1. TECHNICAL SPECIFICATIONS

#### 1.1 FILTER HOUSING

##### Design

This RT inline filter in welded design is built in five sizes and is equipped with SAE flange ports, mounting plate for clogging indicators, mounts etc. This filter series is ideal for large flow rates in low-pressure lines or test bench applications.

The filter housings are designed in accordance with international regulations. They consist of a filter housing and cover.

The element is top-removable.

##### Standard equipment

- mounting holes in the housing
- oil drain plug
- magnetic core built into cover plate
- with bypass valve
- port for a clogging indicator

#### 1.2 FILTER ELEMENTS

RT filter elements are validated and their quality is constantly monitored according to the following standards:  
ISO 2941, ISO 2942, ISO 2943,  
ISO 3968, ISO 11170, ISO 16889

Filter elements are available with the following pressure stability values:

Glass fibre (ULP): 6 bar  
Glass fibre with pre-filter (UMC): 6 bar  
Wire mesh (WPI): 6 bar

Other filtration ratings on request.

#### 1.3 FILTER SPECIFICATIONS

Nominal pressure	25 bar
Temperature range	-30 °C to +100 °C
Material of filter housing	Steel
Material of cover	Spheroidal graphite iron
Type of clogging indicator	Visual / electrical clogging indicator
Response pressure of clogging indicator	2 bar (others on request)
Bypass cracking pressure	3 bar (others on request)

#### 1.4 SEALS

NBR (= Perbunan)

#### 1.5 INSTALLATION

As inline filter so that the filter element can be removed upwards vertically.

#### 1.6 SPECIAL MODELS AND ACCESSORIES

- no port for clogging indicator on filter housing
- without magnetic core
- seals in FKM

#### 1.7 SPARE PARTS

See Original Spare Parts List

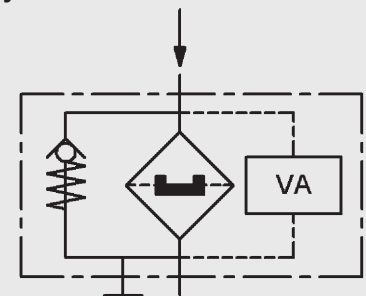
#### 1.8 COMPATIBILITY WITH HYDRAULIC FLUIDS ISO 2943

- Hydraulic oils H to HLPD DIN 51524
- Lubrication oils DIN 51517, API, ACEA, DIN 51515, ISO 6743
- Compressor oils DIN 51506
- Biodegradable operating fluids VDMA 24568 HETG, HEES, HEPG

#### 1.9 IMPORTANT INFORMATION

- Filter housings must be earthed.
- When using electrical clogging indicators, the electrical power supply to the system must be switched off before removing the clogging indicator connector.

#### Symbol



## 2. MODEL CODE (also order example)

DMX 0400 UMC 010 V M D LL 10 N VX X 1 /-XXX

### 2.1 FILTER ASSEMBLY

#### Filter type

DMX

#### Size

0400, 0600, 0800, 1000, 1200

#### Filter material

ULP Glass fibre  
 UMC Glass fibre with pre-filter  
 WPI Wire mesh

#### Filtration rating in $\mu\text{m}$

ULP 010, 025  
 UMC 010, 020  
 WPI 050, 100

#### Bypass valve

V with bypass valve  
 X without bypass valve

#### Magnetic core

M with magnetic core  
 X without magnetic core

#### Setting range

D 25 bar

#### Type and size of port

Type	Port	Size of filter				
		0400	0600	0800	1000	1200
LL	SAE DN 50	●	●			
NN	SAE DN 80			●		
PP	SAE DN 100				●	●

others on request

#### Position of ports

10 Standard

#### Seals

N NBR (Perbunan)  
 V FKM

#### Clogging indicator

VX without clogging indicator (closing plate)  
 VG mounting plate for external clogging indicator  
 VO visual  
 VE electrical  
 VA visual/electrical

#### Response pressure of clogging indicator

A 1.8 bar  
 X no clogging indicator

#### Modification number

X the latest version is always supplied

#### Supplementary details

## 2.2 REPLACEMENT ELEMENT

UMC-0010-xxx-xxxx-x-N-RT /-XXX

### Filter material

ULP, UMC, WPI

### Filtration rating in $\mu\text{m}$

ULP 0010, 0025

UMC 0010, 0020

WPI 0050, 0100

### RT code

### Seals

N NBR (Perbunan)

V FKM

### Packaging

### Supplementary details

## 2.3 REPLACEMENT CLOGGING INDICATOR

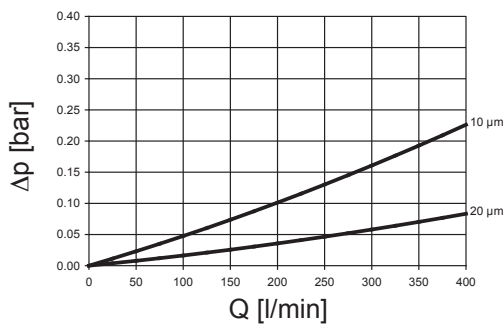
(on request)

## 3. FILTER CALCULATION / DIMENSIONING

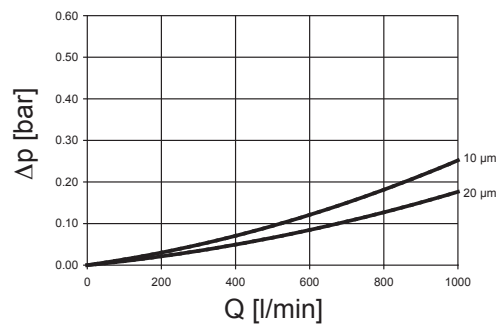
### 3.1 PERFORMANCE CURVES FOR FILTER ASSEMBLY

The total performance curves with UMC-0010... element apply to mineral oil with a density of  $0.86 \text{ kg/dm}^3$  and a kinematic viscosity of  $30 \text{ mm}^2/\text{s}$ .

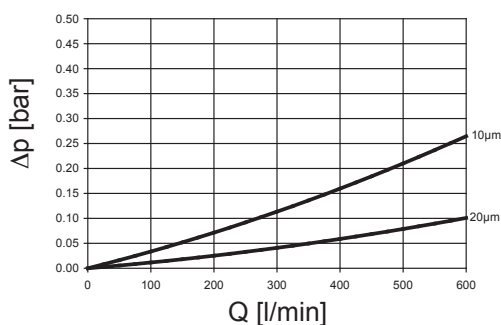
#### DMX 0400



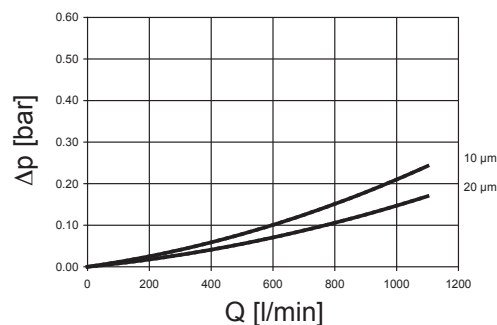
#### DMX 1000



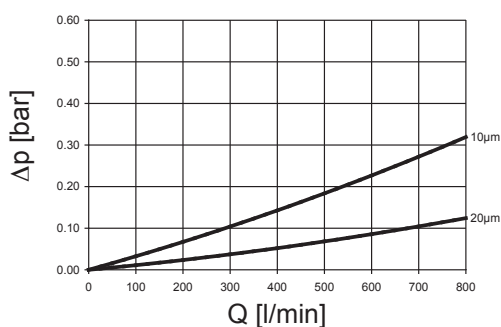
#### DMX 0600



#### DMX 1200

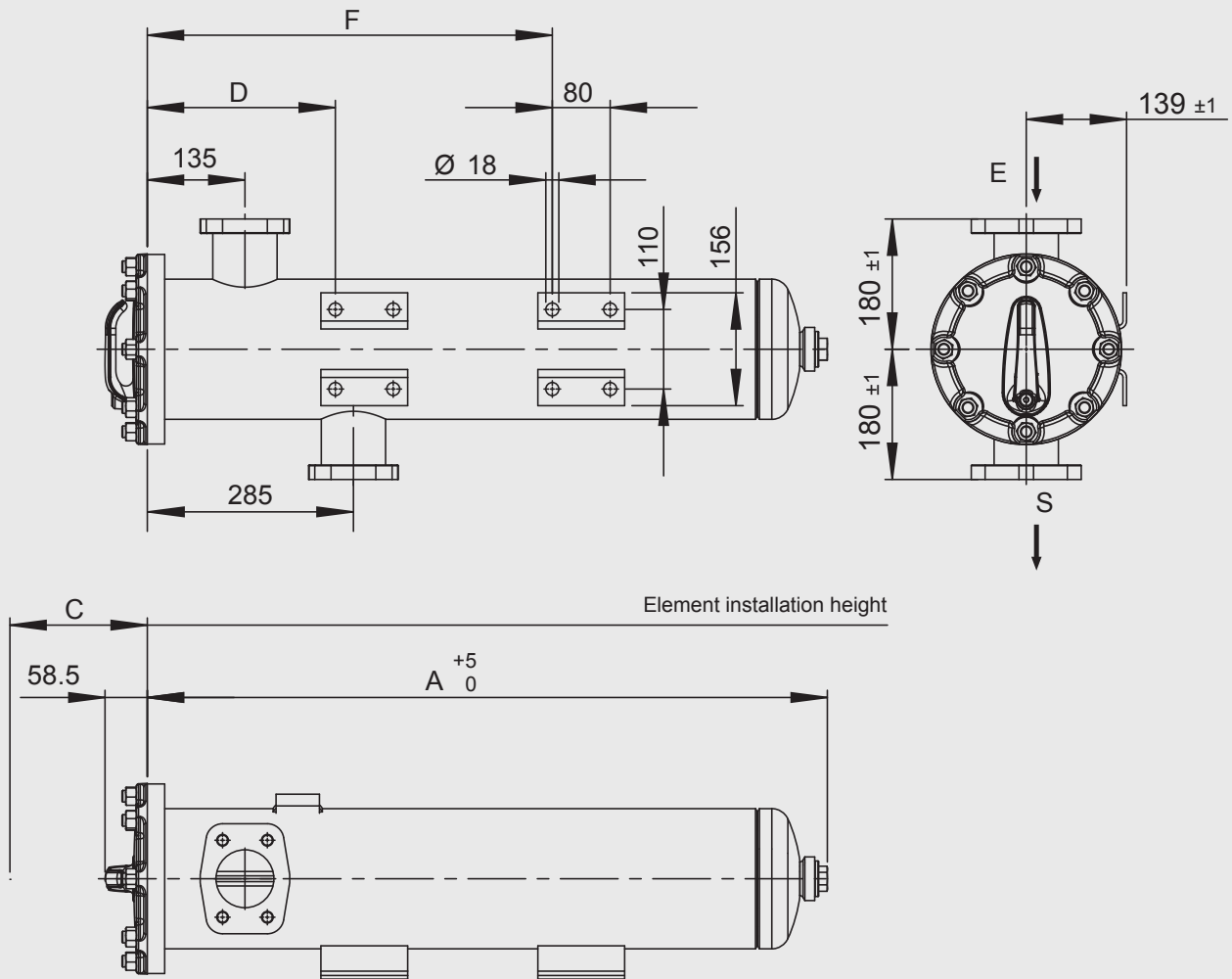


#### DMX 0800



## 4. DIMENSIONS

DMX



Type	Connection E + S	a	C	D	F	Weight incl. element [kg]
DMX 0400	SAE DN 50 (2")	650	400	120	–	33.5
DMX 0600	SAE DN 50 (2")	828	580	220	520	37.8
DMX 0800	SAE DN 80 (3")	940	700	260	560	42.8
DMX 1000	SAE DN 100 (4")	1094	850	260	560	47.9
DMX 1200	SAE DN 100 (4")	1260	1010	260	560	52.3

### NOTE

The information in this brochure relates to the operating conditions and applications described. For applications or operating conditions not described, please contact the relevant technical department. All technical details are subject to change without notice.

**RT-Filtrertechnik GmbH**  
 Postfach 21 60  
**D-88011 Friedrichshafen**  
 Tel.: +49 7541 508-0  
 Fax: +49 7541 508-101  
 e-mail: sales@rt-filter.de  
 Internet: www.rt-filter.de